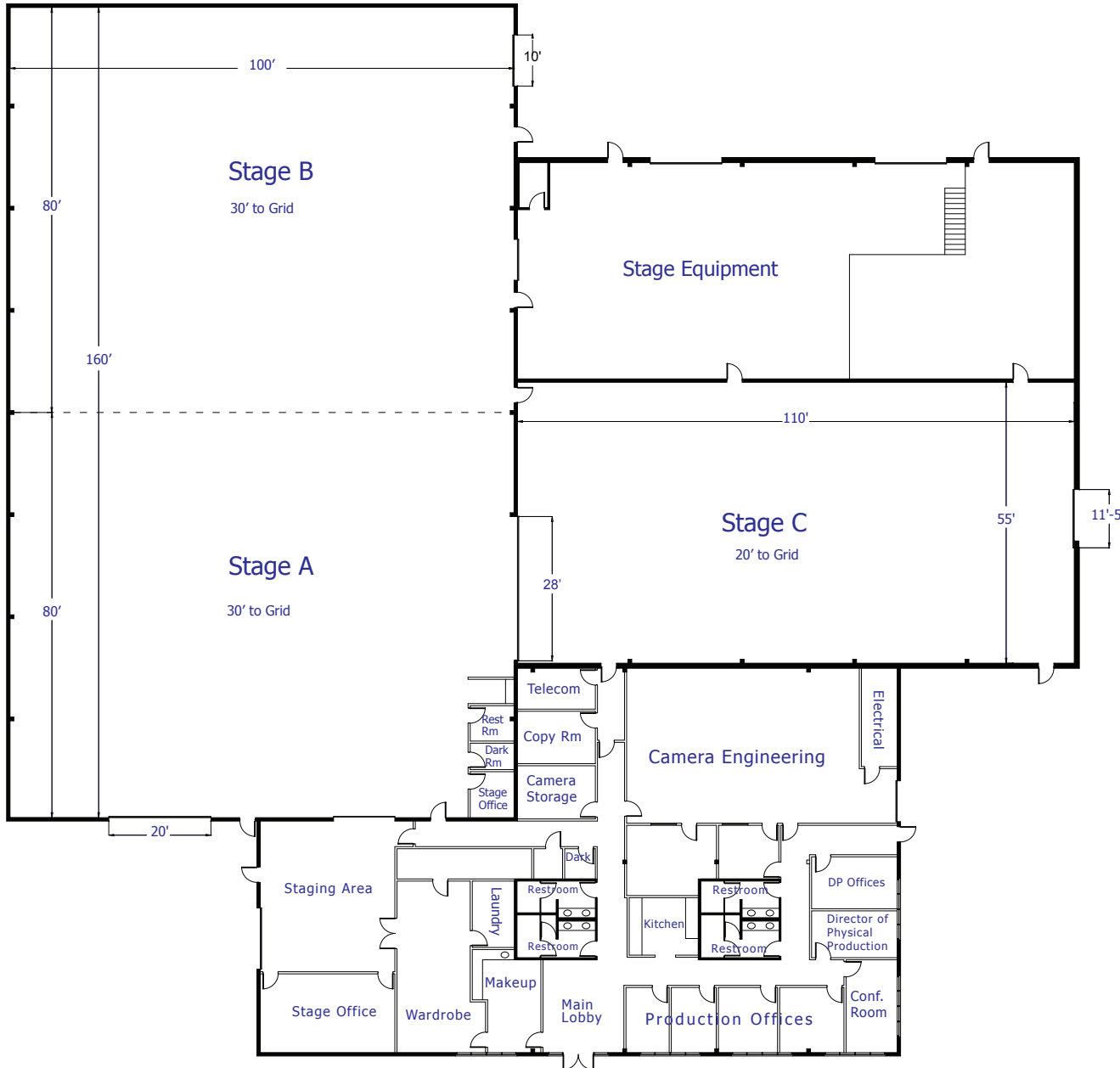




90 WINDWARD WAY
SAN RAFAEL, CA
94901

(415) 448-2000 PHONE
(415) 448-2046 FAX
WWW.KERNER.COM



Stage Features:

Stages 'A & B'

- ** Each Stage:
- * 80' Wide X 100' Deep
(Demising Curtain Can Move In Either Direction, Or Removed To Make One Large Stage)
- * 30' To Grid
- * 1400 Amps, 3 Phase
- * Evacuation Ceiling Fans
- * No Heat, No A/c
- * South Rollup Door 16' X 20'
- * North Rollup Door 10' X 14'

Stage 'C'

- * 55' Wide X 110' Deep
- * 20' To Grid
- * 1400 Amps, 3 Phase
- * Evacuation Ceiling Fans
- * Heat = Yes, A/c = Yes
- * East Rollup Door 11'-5" X 16'

Also Available

- * Production Offices
- * Make-up Room
- * Wardrobe Room
- * Dark Room
- * Conference Room
- * Kitchen
- * Wireless Access